

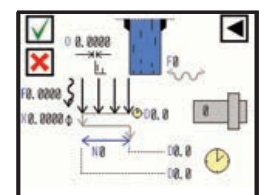
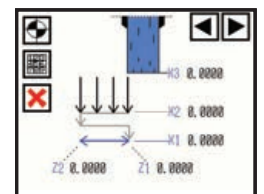
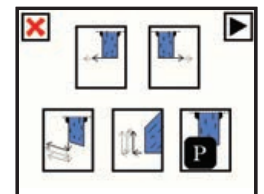
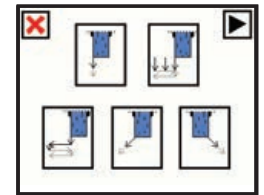
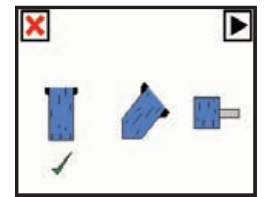
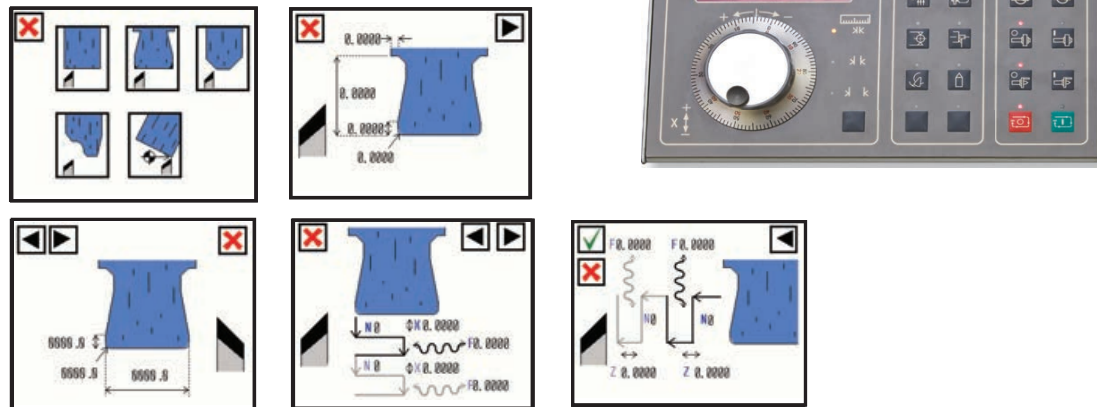
Jones & Shipman 'Easy' Cylindrical Grinder Control System

Suprema & Ultramat Models



Grind Cycle screens

Dress Cycle screens



Affordable & sophisticated cylindrical grinding with simple set-ups

- Offers the operator the advantages of CNC control without the complexity of traditional CNC systems.
- Jones & Shipman easy-to-use icon based software with Touchscreen control can interpolate two axes simultaneously to enable precision grinding of complex shapes, angles and diameters.
- Easy manual, semi or fully automatic operation.
- 'Self Teach' software enables inexperienced & experienced operators to be immediately more productive.
- All controls are immediately to hand for setting and manual operation when required.
- Quick set automatic dressing & grinding cycles enable unmanned operation.
- Ability to use CBN and Diamond wheels.

Easy & rapid set-up for automatic grind cycles

- At start-up the operator is offered three simple options: Manual, Dress or Grind Cycle mode.
- In Manual mode the Easy operates as a simple hand controlled machine, with manual dress and no setup procedures. Work speeds and feeds are adjustable via the touchscreen.
- Dress mode offers five standard wheel shape options, Straight, Slot, Facing, Vee form and Full ISO with one or two diamonds as needed.
- Grind Cycle mode allows from 1 only, or up to 20 Grind Cycles, as the complexity of the component dictates.

Standard Features

- Manual, semi or automatic operation
- Touchscreen control
- Manual traverse or plunge grind for 1 off's
- Up to 20 linked cycles in auto mode
- Manual or auto wheel dressing
- In or out of cycle dressing with full compensation
- Dress on demand
- Straight dress, left hand face dressing
- Auto cycles:- Plunge, Traverse, Face grinding with L/H side of wheel, Plunge & shoulder (L/H only), Multi- plunge & traverse grind
- Regrind

- Simple trimming

Advanced software suite extra features

- Straight dress left or right wheels
- Fully compensated easy form dressing of complex profiles & Vee forms without additional form dressing attachments
- Extra auto cycles:- Thread grinding, Peel grinding, Taper traverse grinding, Contour grinding, etc.
- Easy download/upload to & from PDA or PC of CAD/CAM programs for complex wheel profiles and part program storage
- Includes Heidenhain® 'Absolute' 50 nanometer linear scale upgrade to X & Z axes